

COSbatch web browser User Interface

The most recent addition to the family of six user interface modules for use with the *COSbatch* job scheduling and operations workflow management product.

This latest user interface component joins the existing line-up which comprises the *COSbatch* user interface for Windows®, the X Window System user interface, the *COSbatch* user interface for PATROL®, the Character Terminal user interface and the Command Line user interface.

COSbatch is most often deployed over enterprise networks incorporating several Unix, Linux and Windows® servers. It follows that users may value the option to control and administer *COSbatch* modules by means of what is now the default user access method for networked users – the web browser. In addition to offering the advantage of a widespread standard, a user interface delivered via a web browser also permits *COSbatch* to be accessed without regard to distance.

The web browser User Interface supports a defined selection of *COSbatch* functions. It allows users to:

- ◆ Submit batch jobs
- ◆ Monitor and manage batch jobs and queues
- ◆ Monitor and manage job suites

All these operations are controlled by the normal *COSbatch* access security mechanisms which users recognize as being robust, fine grained and easily managed. In short, nobody can access any *COSbatch* object (queue, processor or calendar) or routine via the web browser interface without having the appropriate access level granted to them.

The current release of the *COSbatch* web browser user interface has been tested to ensure compatibility with several of the most common J2EE compliant application servers and browser components, specifically:

- ◆ Jakarta Tomcat
- ◆ Microsoft® Internet Explorer 6.x web browser
- ◆ Netscape® 7.x web browser

The way in which the web browser interface

works with the *COSduty*-SSA operations workflow engine (itself embedded within *COSbatch* 2.4) is discussed in a separate datasheet.

Submitting a batch job

Although submitting a single batch job via the web browser user interface is uncommon, an easy to understand form makes the task a simple one.

The form is used to identify a job, assign its attributes, then submit it to *COSbatch* to be processed. The parameters listed on the form are the standard *COSbatch* parameters as described in the *COSbatch* User

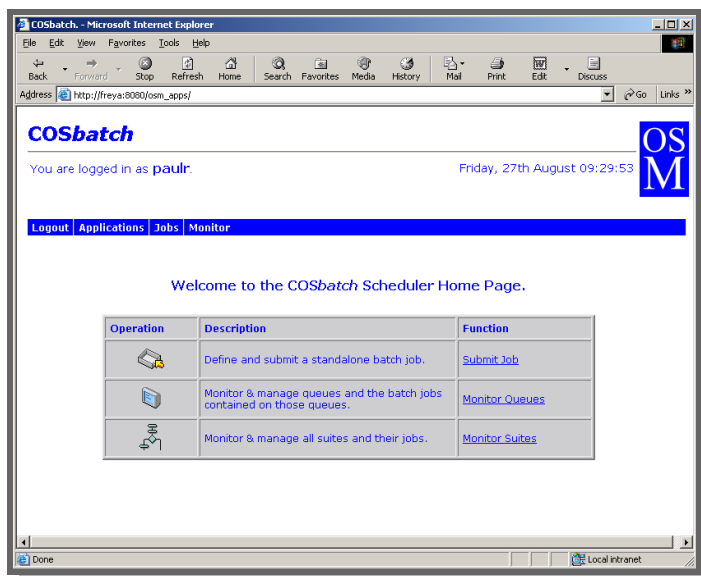


Figure 1 – Home page of the web browser user interface

Guide and the values shown apply to the particular Job.

Monitoring jobs and queues

After selecting the option from the home page to Monitor queues, the page shown below will be seen. This displays an entry for every queue. The columns presented depend on the user's access permissions, as do the contents of the control menu for acting on the contents of the table.

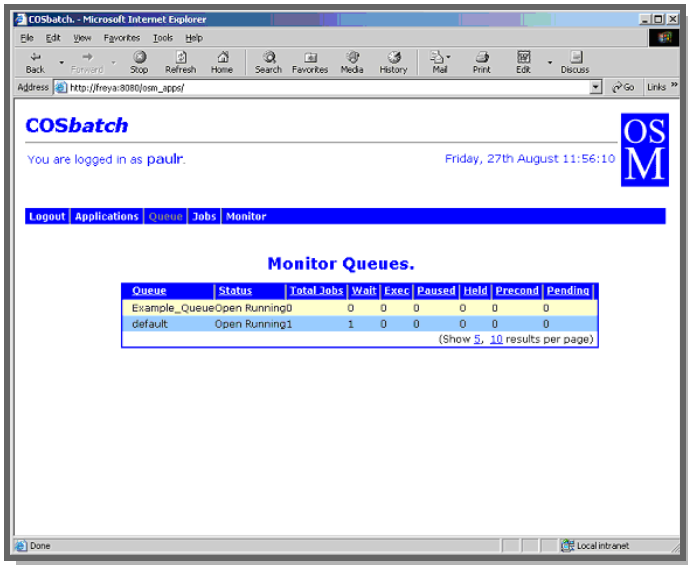


Figure 2 – monitoring COSbatch queues

Drilling down by double clicking on a queue then shows the jobs contained within that queue and enables job level management controls to be actioned, e.g. **Release, Force, Hold, Pause, Delete** a job.

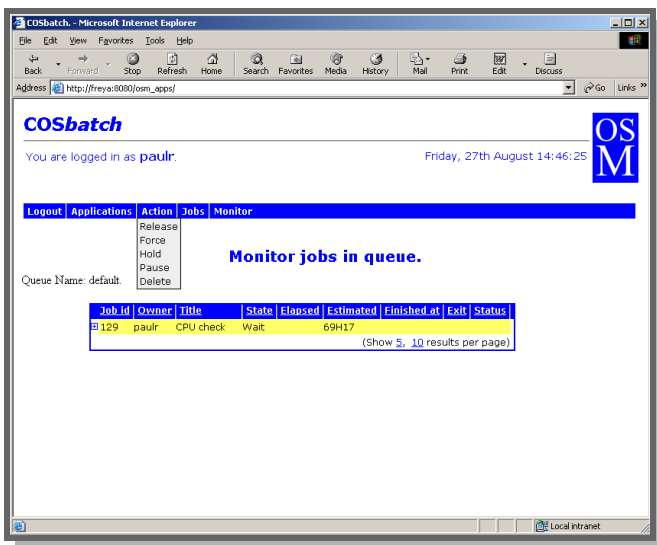


Figure 3 – managing jobs in the queues

In this manner, the same job and suite management functions found in the other graphical user interfaces available for COSbatch are presented to the user via the browser.

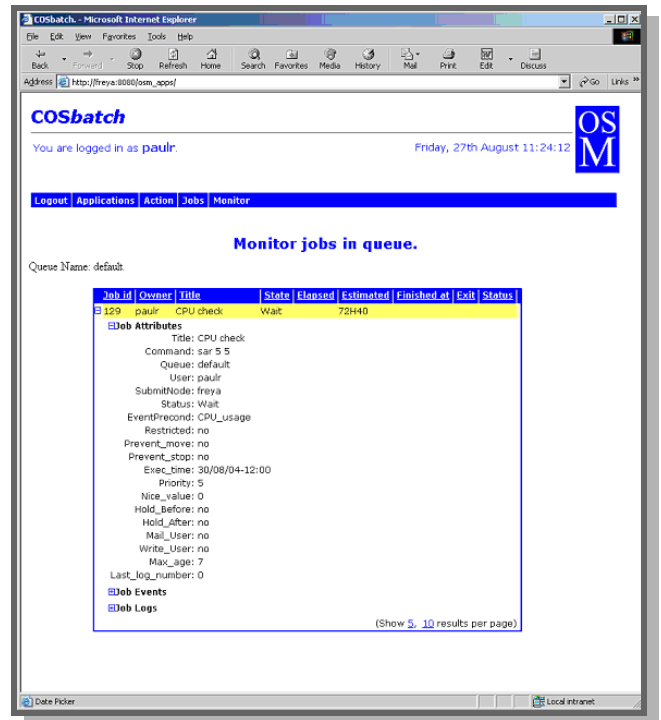


Figure 4 – displaying job attributes through the browser

For further information on the web browser interface to COSbatch, please refer to the white paper on COSbatch V2.4.

OPEN SYSTEMS MANAGEMENT, INC.

1511 Third Avenue, Suite 905
Seattle WA 98101
USA

Tel: (866) 601 8011 (toll-free, USA)
Fax: (206) 583 8374

OPEN SYSTEMS MANAGEMENT LTD

Kings Ride Court
Kings Ride
Ascot, Berkshire SL5 7JR
UK

Tel: +44 (0)1344 638000
Fax: +44 (0)1344 638011
info@osm.co.uk

